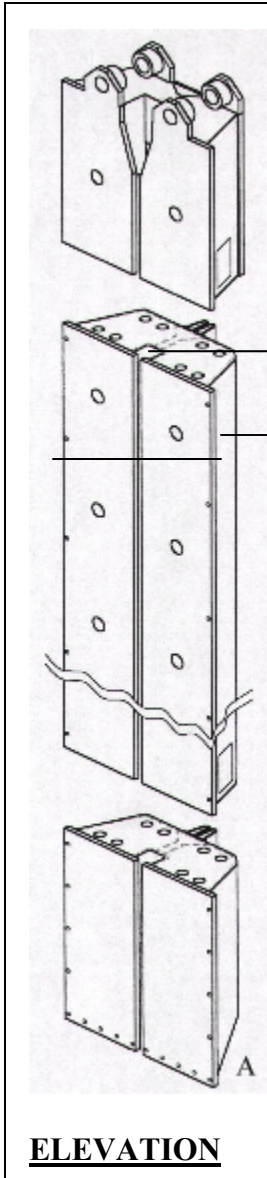


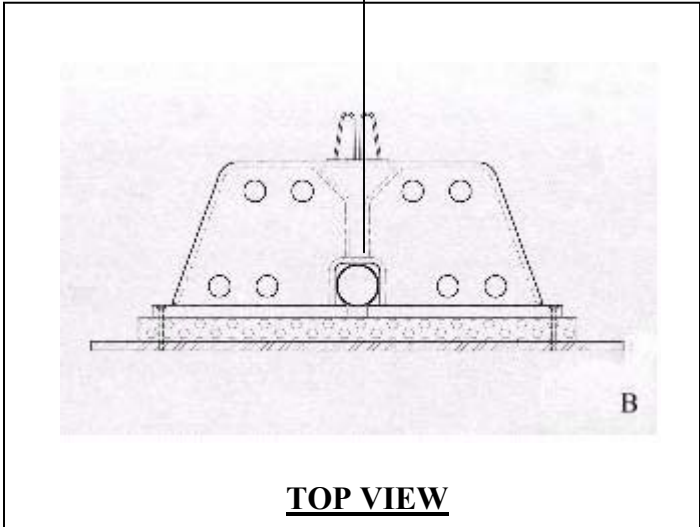
**DETAILS OF PEEL OFF AS STOP END WITH WATER STOPPER USED  
IN DIAPHRAGM WALL CONSTRUCTIONS.**



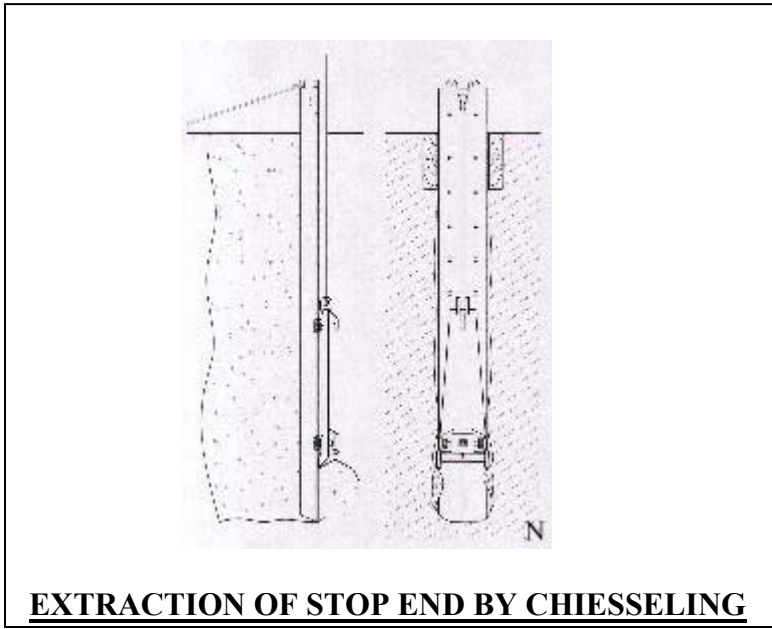
**ELEVATION**

DEPTH OF GROOVE TO BE KEPT HALF OF WATER STOPPER WIDTH  
WIDTH OF STOP END PIPES TO BE 560MM FOR 600 MM Diaphragm Wall

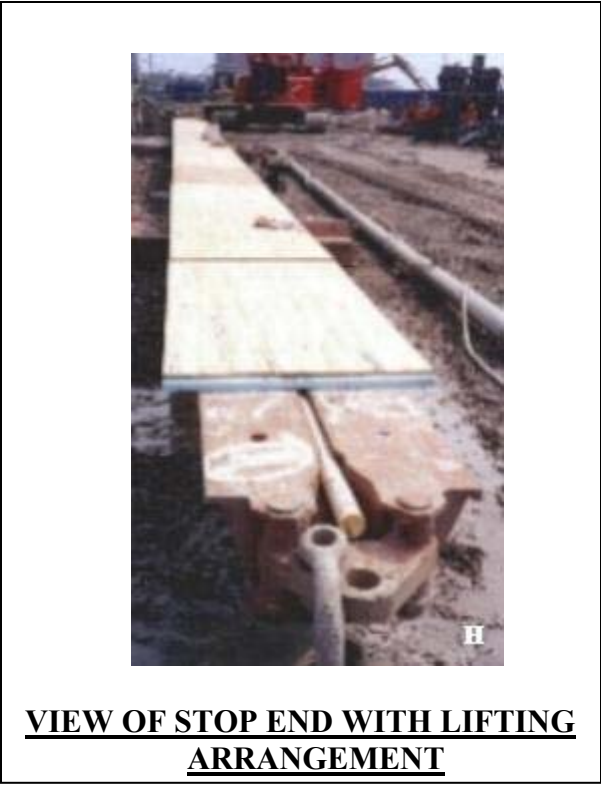
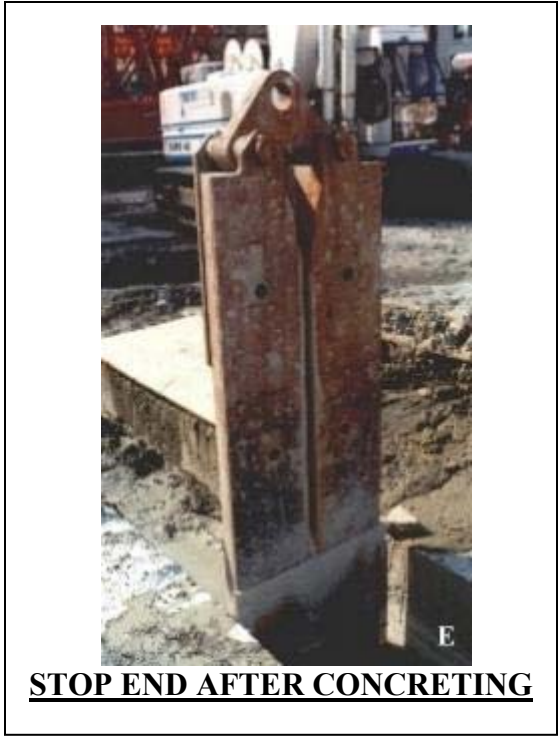
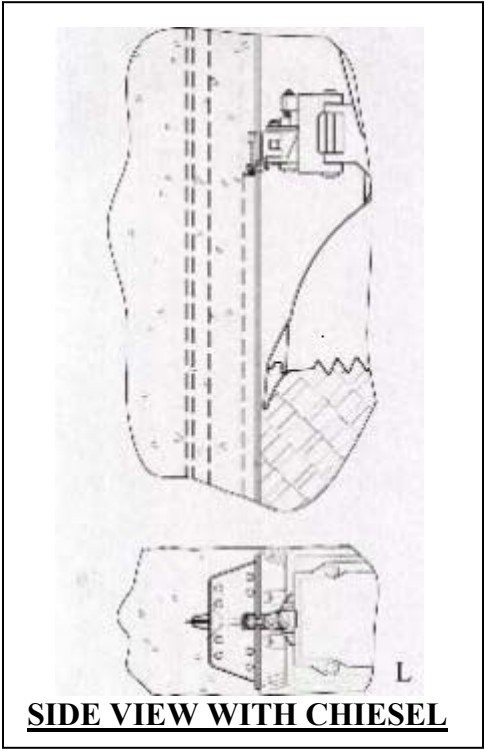
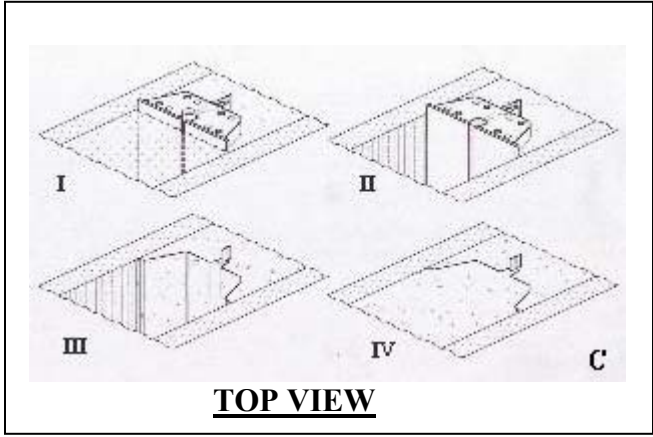
Width Of Groove to be Kept as Per Thickness of water Stopper

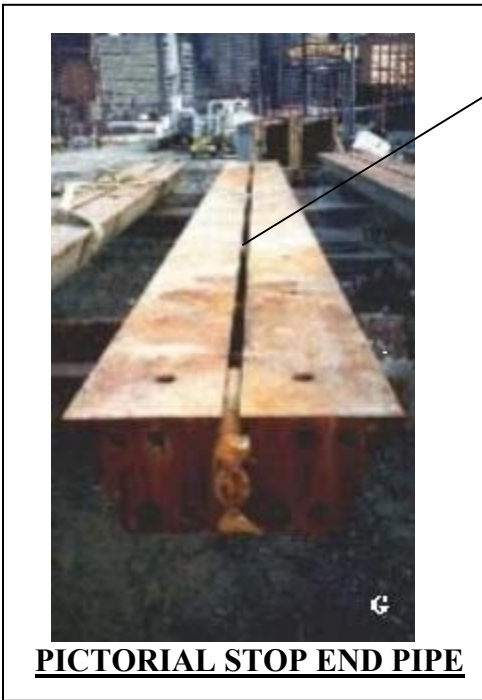


**TOP VIEW**

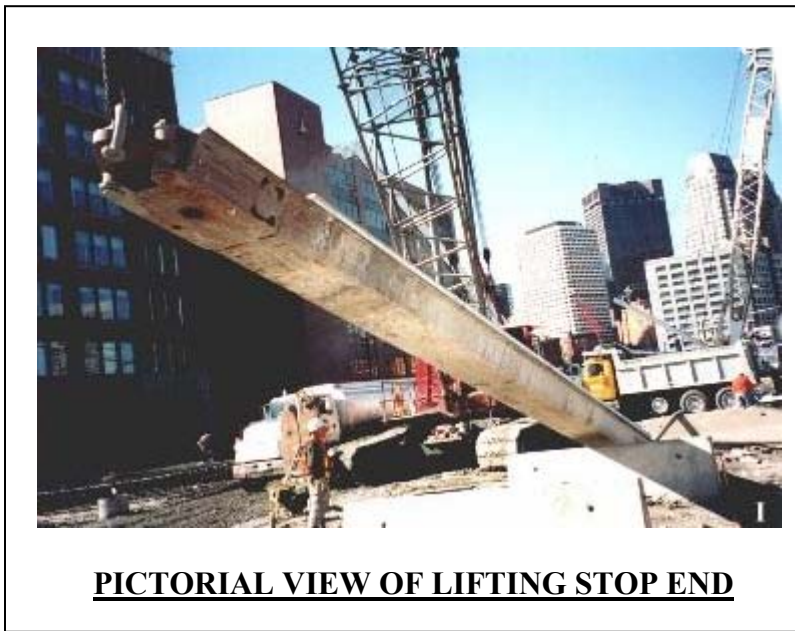
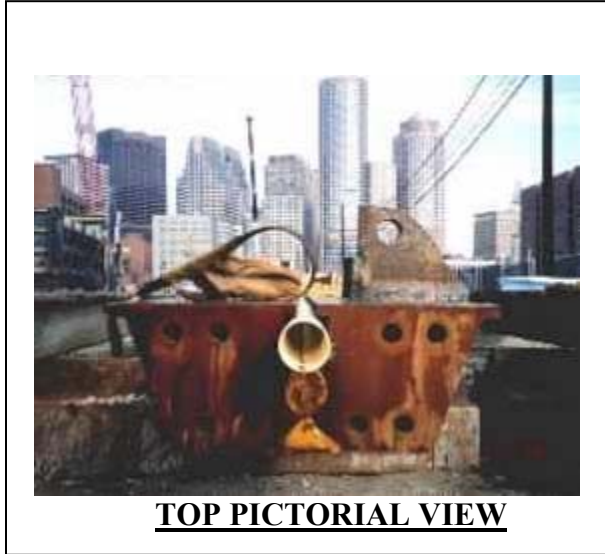


**EXTRACTION OF STOP END BY CHIESSELING**





GROOVE FOR WATER STOPPER



**For Base Plate 25 mm plate to be use, for box by150MMX150MM to be used.  
Length of Stopend to be keep maximum depth of diaphragm wall +1.50 mtr.**